



## STNA: A Data Source for Evaluating Technology Projects in Schools and Districts


**SERVE Center at UNCG**  
STNA Web Page  
<http://www.serve.org/Evaluation/Capacity/EvalFramework/resources/STNA.php>


1 



## Guiding Questions


- What is STNA?
- Why do schools use STNA?
- What data does it collect?
- How do we implement STNA?
- Why do response rates matter?
- What data is reported?
- How is STNA data interpreted?
- How can STNA findings be used?


2 



## Partnerships


- Technology in Learning Program at SERVE Center at UNCG
- Looking At North Carolina Educational Technology (LANCET)
  - Federally Funded Evaluating State Education Technology Programs (ESTEP) Project
  - Partnership between NCDPI, NC State University, SERVE


3 



## What is STNA?


- Part of a suite of resources to help LEAs and schools increase their internal capacity to evaluate technology projects, including...
  - Classroom observation protocol
  - Technology-partnership survey
  - Professional development questionnaire
  - Tools to develop rubrics, logs, and other instruments
- <http://www.serve.org/Evaluation/Capacity/>


4 



## What is STNA?

- School Technology Needs Assessment (STNA)
- Self-report survey instrument
- Web-based response form, data storage, and reporting
- Targets both classroom and school levels
  - “In my school...”
  - “In the settings where I work with children...”
  - “I would benefit from professional development on...”


5 



## What is STNA?

<http://www.keysurvey.com/survey/134127/1516/>

Strongly Agree	Agree	Neither Agree nor Disagree	Disagree	Strongly Disagree	Do Not Know
<b>1) A vision for technology has been developed through an effective collaboration among stakeholders, e.g., administrators, spouses, teachers, students, and community members.</b>					
<input type="radio"/>	<input type="radio"/>	<input type="radio"/>	<input type="radio"/>	<input type="radio"/>	<input type="radio"/>
<b>2) The vision for technology use has been effectively communicated to the community.</b>					
<input type="radio"/>	<input type="radio"/>	<input type="radio"/>	<input type="radio"/>	<input type="radio"/>	<input type="radio"/>
<b>3) Administrators model effective uses of technology.</b>					
<input type="radio"/>	<input type="radio"/>	<input type="radio"/>	<input type="radio"/>	<input type="radio"/>	<input type="radio"/>
<b>4) Administrators support changes in school-level systems, policies, and practices related to technology.</b>					
<input type="radio"/>	<input type="radio"/>	<input type="radio"/>	<input type="radio"/>	<input type="radio"/>	<input type="radio"/>
<b>5) Teachers who are innovators with technology receive material incentives, e.g., stipends, perks, awards, special opportunities.</b>					
<input type="radio"/>	<input type="radio"/>	<input type="radio"/>	<input type="radio"/>	<input type="radio"/>	<input type="radio"/>
<b>6) Teachers who are innovators with technology receive non-material incentives, e.g., public recognition, special appreciation.</b>					
<input type="radio"/>	<input type="radio"/>	<input type="radio"/>	<input type="radio"/>	<input type="radio"/>	<input type="radio"/>
<b>7) When administrators are seeking or hiring teachers, they consider technology literacy and leadership for technology as criteria for selection.</b>					
<input type="radio"/>	<input type="radio"/>	<input type="radio"/>	<input type="radio"/>	<input type="radio"/>	<input type="radio"/>

6 



## Why would we use STNA?

- You want to know what staff members think and feel about...
  - Leadership, planning, and budgeting
  - Infrastructure and resources
  - Professional development
  - Their classroom practices with technology
  - The impact of technology on students

7

SERVE Center  
at the University of North Carolina  
at Greensboro



## What data does STNA collect?

- Supportive Environment for Technology Use
  - Vision and Shared Leadership
  - Organizational Conditions
  - Flexible Scheduling
  - Infrastructure
  - Staff Support
  - Media and Software

8

SERVE Center  
at the University of North Carolina  
at Greensboro



## What data does STNA collect?

- Professional Development
  - Instruction
  - Planning
  - Professional Development Quality
- Teaching and Learning
  - Instruction
  - Planning
  - Use of Information and Communication Technologies

9

SERVE Center  
at the University of North Carolina  
at Greensboro



## What data does STNA collect?

- Impact of Technology
  - Teaching Practices
  - Student Outcomes

10

SERVE Center  
at the University of North Carolina  
at Greensboro



## How do we implement STNA?

- Email Torria Ferguson at [tferguso@serve.org](mailto:tferguso@serve.org) with...
  - name of your school
  - name of your district
  - STNA coordinator's name and email address
  - opening and closing dates for the survey
  - expected number of staff who will complete the survey

11

SERVE Center  
at the University of North Carolina  
at Greensboro



## How do we implement STNA?

- See "Implementing STNA in Your School" handout
  - Have all staff working with students complete STNA at your unique URL – goal is 100% response rate
  - Coordinate STNA completion, track who has completed the survey
  - Follow up with slow respondents
  - Report URL is emailed after STNA closes
  - Reconvene team to make decisions based on STNA results

12

SERVE Center  
at the University of North Carolina  
at Greensboro



### Why do response rates matter?

- STNA is designed to be completed by all staff members working with kids
- Report provides a school-level *profile of what technology looks like*
- Staff size has an impact

13



### What data is reported?

- STNA reports *descriptive data*
  - Item and response set
  - Frequencies
  - Percentages
  - Bar graph with *automatic scaling*
- This data has limits

14



### How is STNA data interpreted?

- Bar charts
  - Distribution or *profile of technology*
  - Blue & Green = Good!
  - Red = Fence-sitters, I can't decide
  - Yellow & Purple = Not so good
  - Teal = "Do not knows"

15



### How is STNA data interpreted?

CONDITIONS	SA	A	N	D	SD	?	Total
9) The budget for technology resources is adequate in size to support decisions arising from planning and continuously update and replace technology systems as they become outdated.	27.1% ( 19 )	35.7% ( 25 )	14.3% ( 10 )	7.1% ( 5 )	1.4% ( 1 )	14.3% ( 10 )	70



### How is STNA data interpreted?

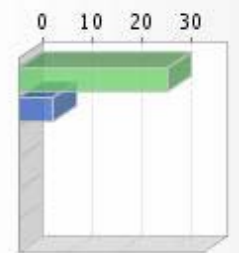
- You might get more questions instead of answers
- Look at the profile...
  - Generally, positive or negative?
  - Number of peaks?
  - Height of peaks?
  - Very different than other items?

17

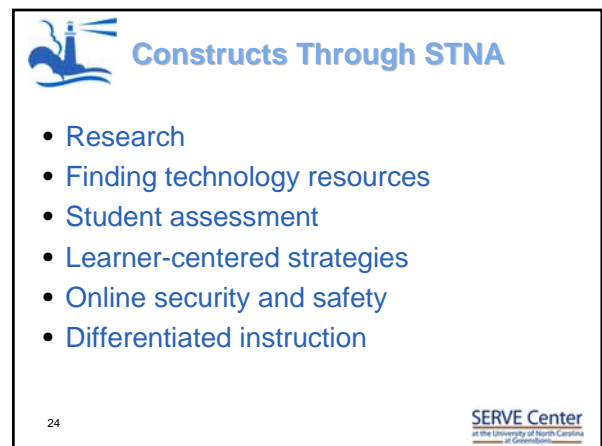
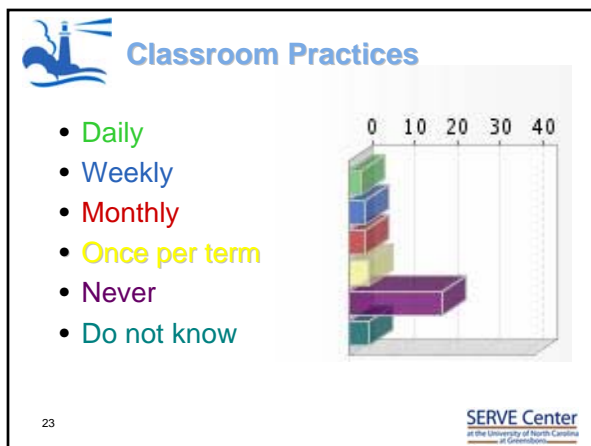
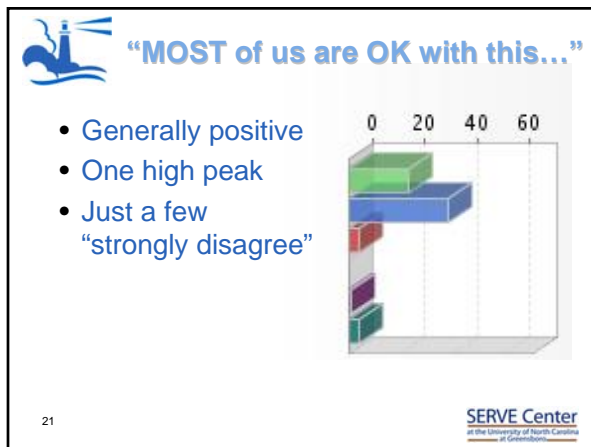
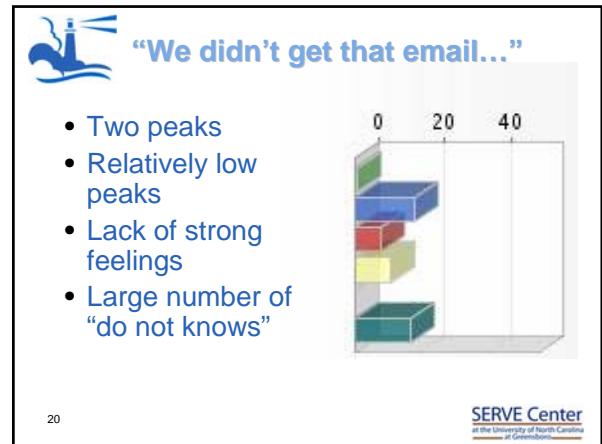
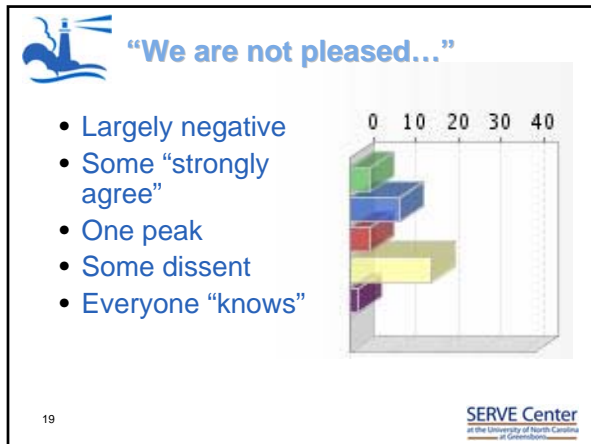


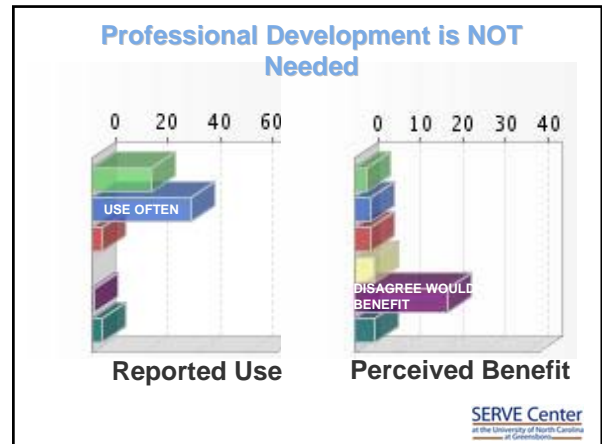
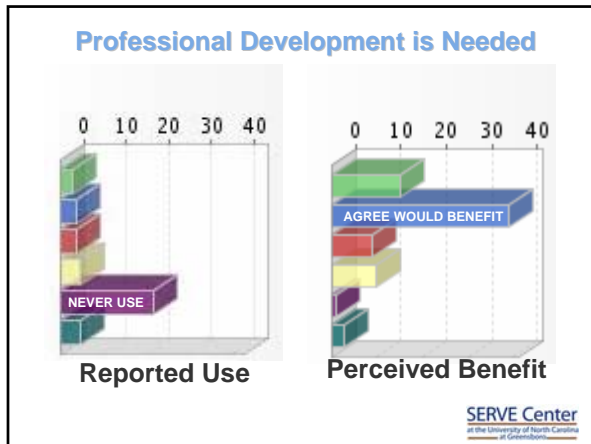
### "We're all good..."

- Very positive
- One high peak
- No dissent among respondents



18





### How can findings be used?

- Report your STNA findings to stakeholders
  - Increase buy-in
  - Improve project implementation
  - Encourage participation in project evaluation

27

SERVE Center  
at the University of North Carolina  
at Greensboro

### How can findings be used?

- Plan your technology program implementation
  - Incorporate into your School Improvement Plan, Technology Plan
  - Define your priorities
  - Plan professional development
  - Allocate resources – *funding, staffing, infrastructure*

28

SERVE Center  
at the University of North Carolina  
at Greensboro

### How can findings be used?

- Clarify your technology program implementation steps
  - Provide rationale for your goals and objectives
  - Connect to your strategies
  - Make your case with needs data
- Repeated uses track changes in the school STNA “profile”

29

SERVE Center  
at the University of North Carolina  
at Greensboro

### Contact Information

The **SERVE Center at UNCG**  
Technology in Learning (TiL)  
919-402-1060

30

SERVE Center  
at the University of North Carolina  
at Greensboro