

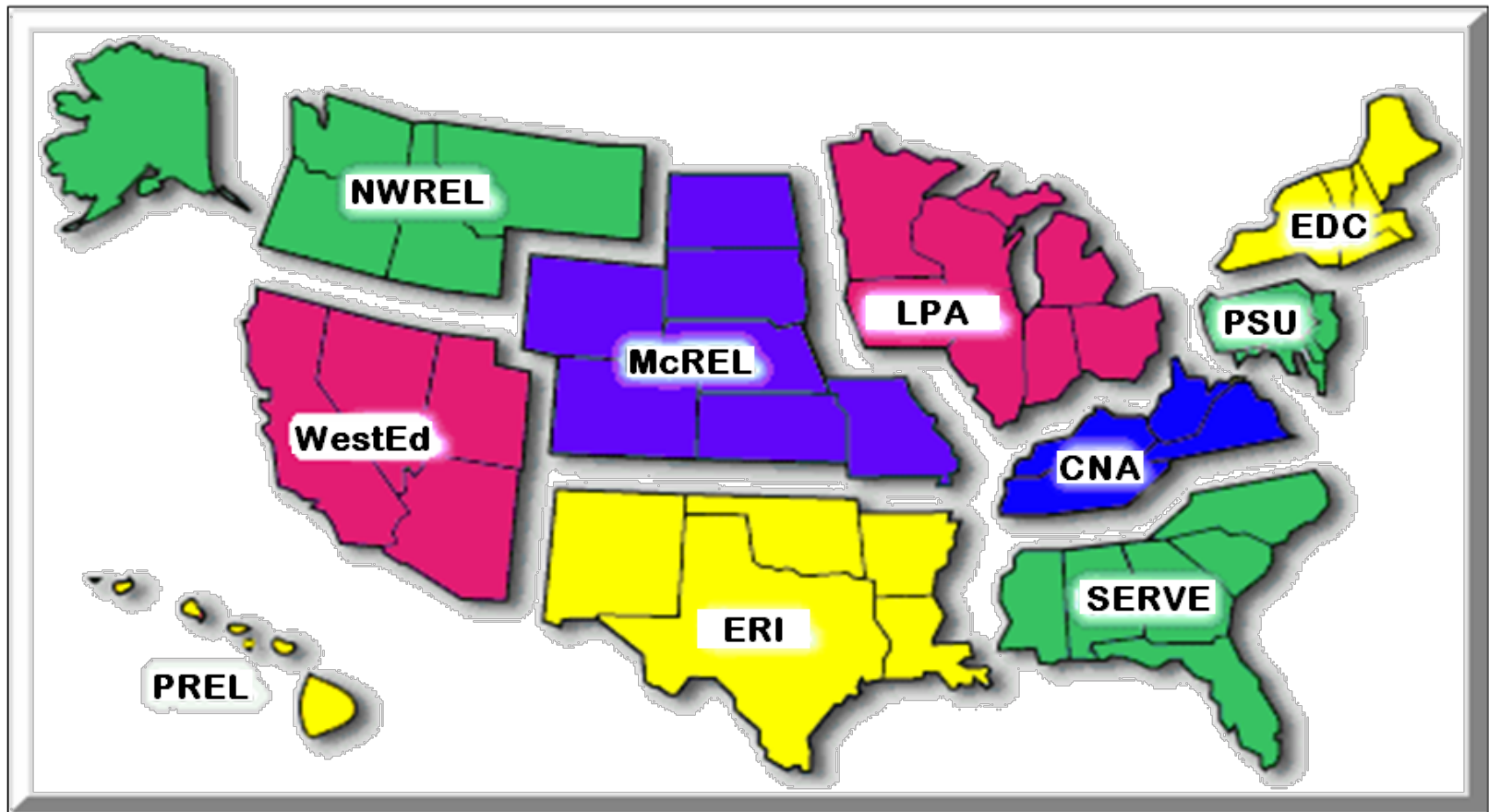
Professional Learning Communities 101

SERVE Center at UNCG 10 minute College Series

Goals

- To review the role of Professional Learning Communities
- To examine the EBDM Cycle and PLCs
- To briefly review the literature on PLCs

Regional Education Laboratories



Have you ever been in one of those professional development sessions when...

- This relates, how?
- Great, now what?
- We said we'd what?!?
- “Independent contractors sharing a common parking lot.”

What are PLCs?

- Professional Learning Communities/Learning Teams
- Improve Practice
- Increase Student Performance
- Teams of 3-6
- Across curriculum or grades
- Commitment and Focus

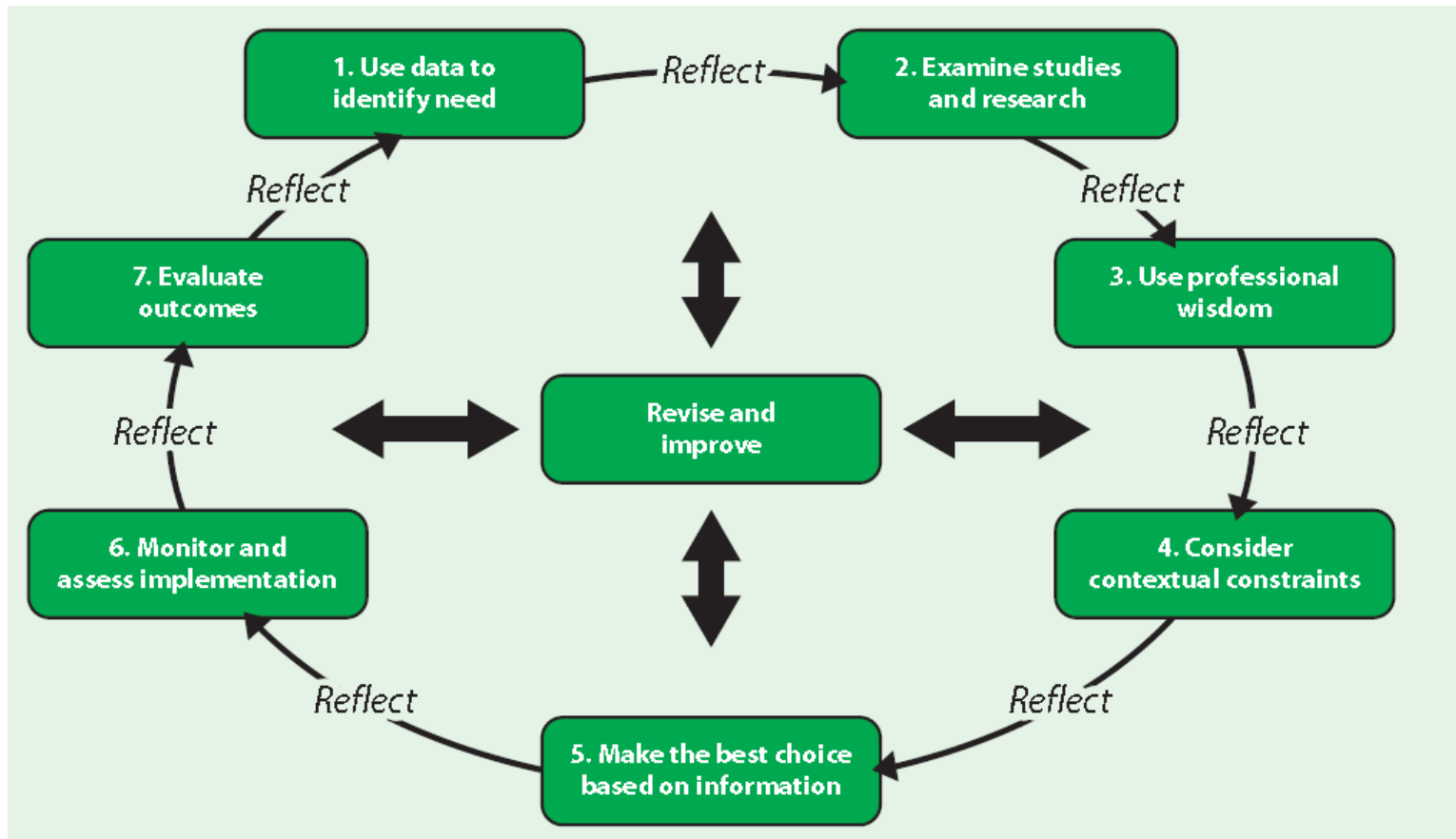
So what do PLCs *do* anyway?

- Examine student achievement and classroom data
- Develop a shared instructional goal
- Establish shared norms
- Study and learn
- Maintain team logs

So what do PLCs *do* anyway?

- Build supportive relationships
- Work together
- Communicate
- Analyze
- Rotate leadership responsibilities

An Evidence-based Decisionmaking Cycle



How do we know we are on track?

- Teacher Teams
 - Collaboration
 - Group norms
 - Focus
 - Resources
 - Motivation
 - Purpose
 - Passion

How do we know we are on track?

- School Culture
 - Policies
 - Leadership involvement
 - Role of district office

How do we know we are on track?

- Student
 - State assessments
 - End of course exams
 - Classroom assessments
 - Teacher observations
 - Student motivation
 - Student engagement

Why do this?

Increase

- Math, Science, History, Reading, Writing
- Student Satisfaction
- Commitment to doing work
- Student Engagement

Decrease

- Tardiness
- Student Moodiness
- Absenteeism
- Drop Out

What's the bottom line?

PLCs are a deliberate process that requires attention, focus, and a willingness to move beyond sharing lessons and ideas to critically examining practice, research, and implementation (Wells & Fenn, 2007).

Change takes time. It is often difficult and slow.

For more information on Professional Learning Communities at SERVE, contact

Katie Dufford-Melendez
Senior Program Specialist
SERVE Center at UNCG
kdufford@serve.org
336.543.6760

Bibliography

Evaluation Questionnaire

Please complete the following web-based questionnaire

Website address:

<http://www.keysurvey.com/survey/201761/f7dc/>